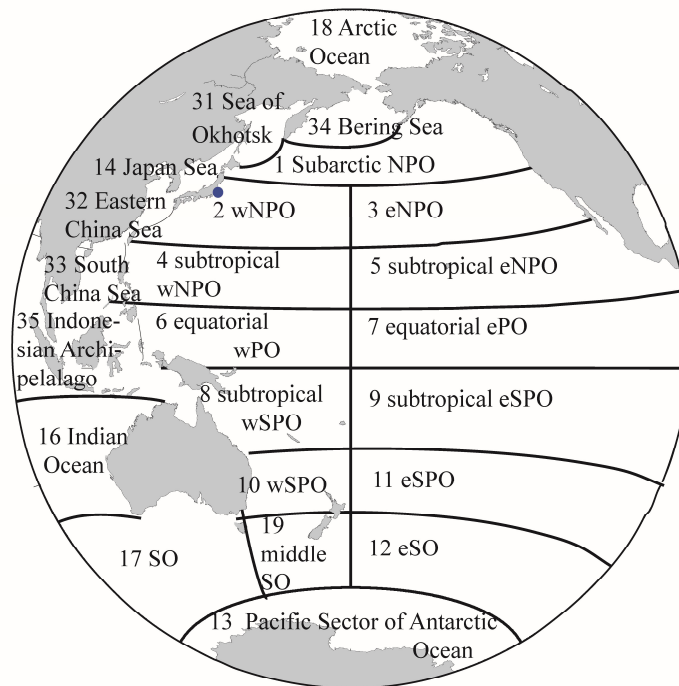
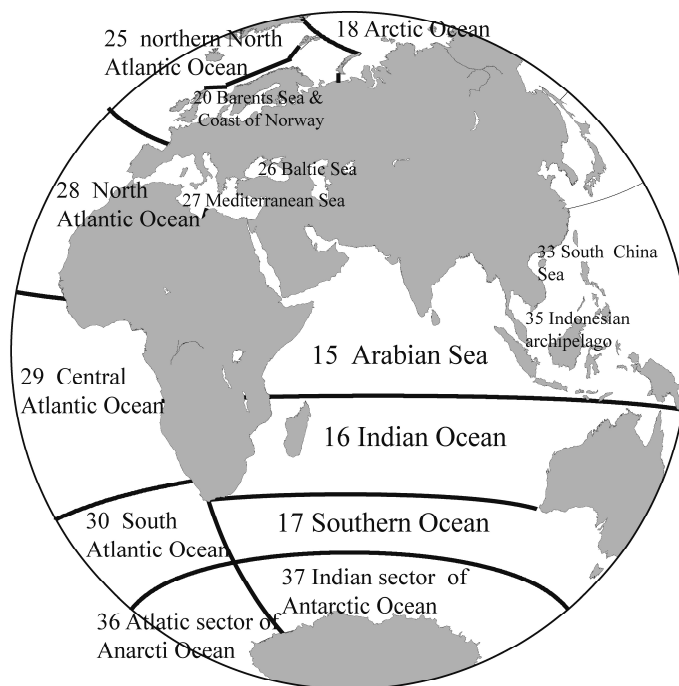


(a)



(b)



(c)



Fig.1. The global ocean was divided into the 37 boxes. (a) Pacific Ocean, (b) Atlantic Ocean, and (c) northern North Atlantic Ocean and its marginal Sea.

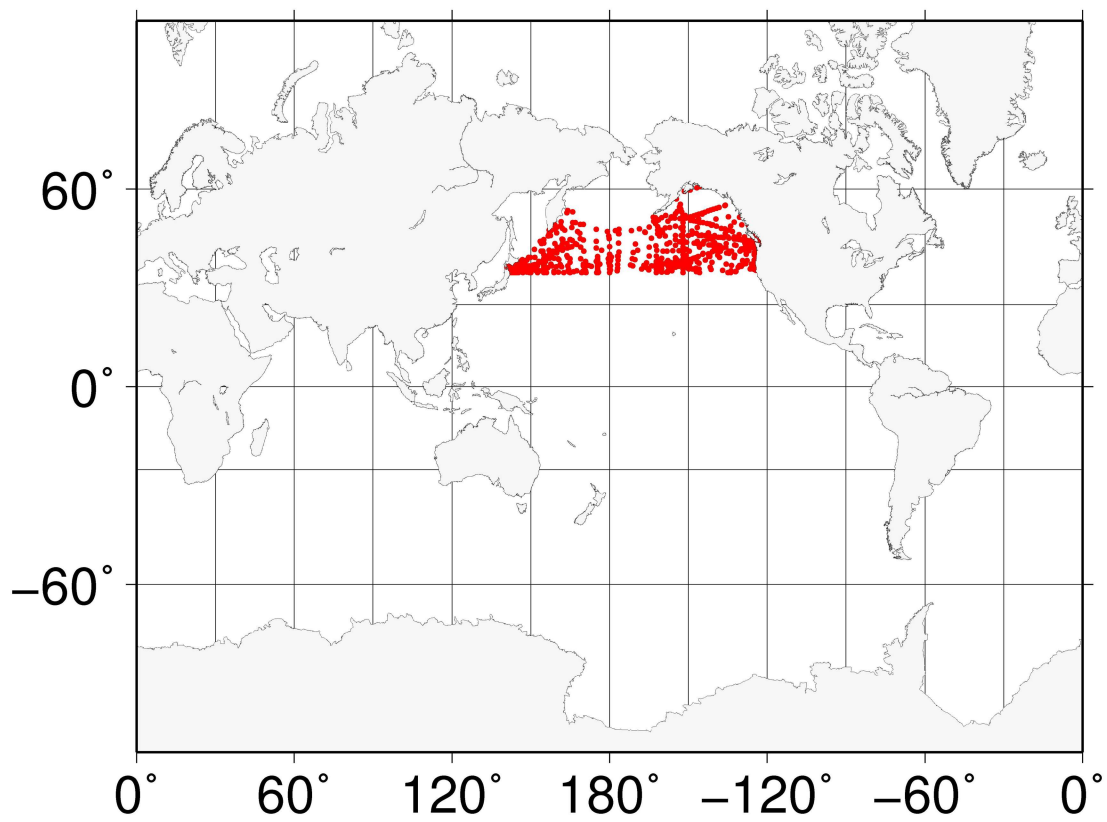


Fig. 2.1. Sampling location (red point) in the subarctic North Pacific Ocean (Box 1).

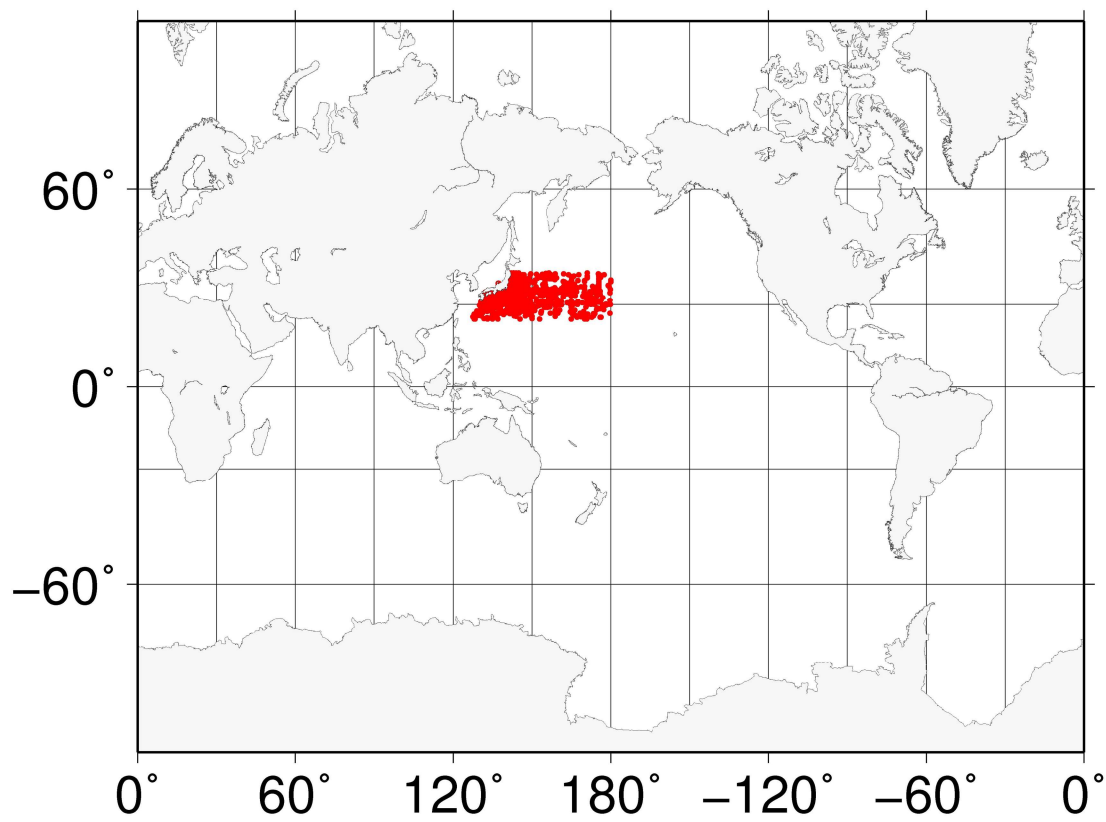


Fig. 2.2.1 Sampling location in the western North Pacific Ocean (Box 2).

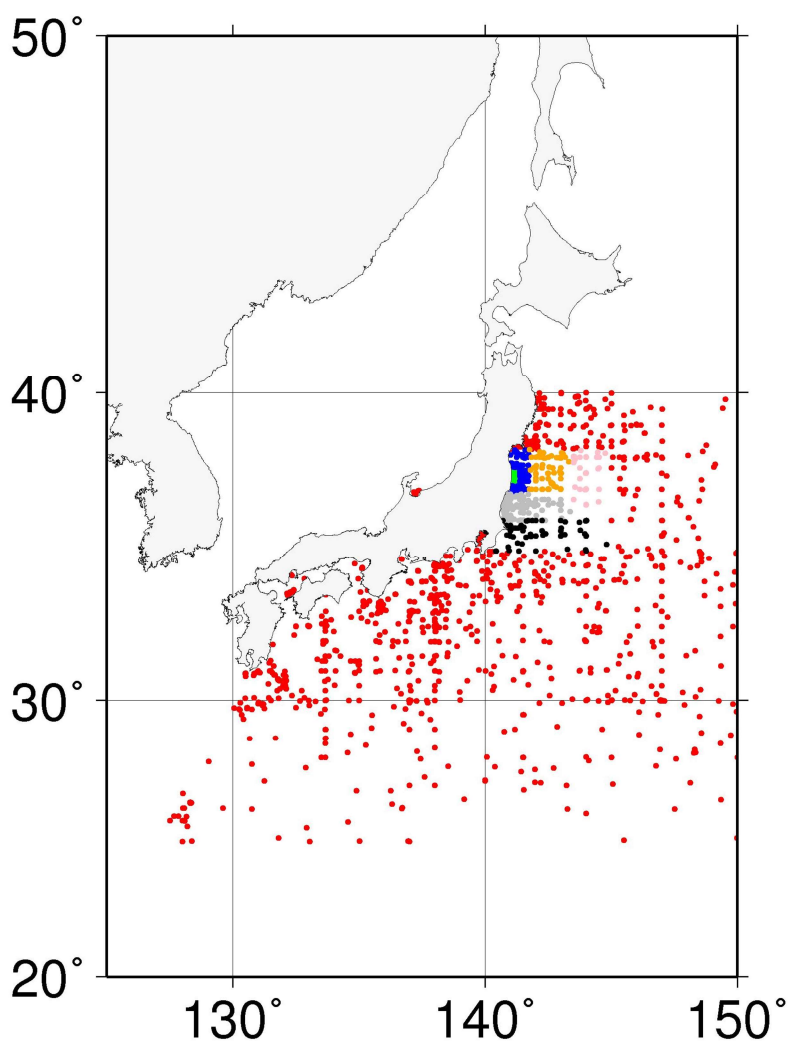


Fig. 2.2.2 Sampling location in the western North Pacific Ocean (Box 2). Box2 is divided into seven sub-boxes, Box 2.0 (red circle), Box 2.1 (green circle), Box 2.2 (blue circle), Box 2.3 (orange circle), Box 2.4 (gray circle), Box 2.5 (pink circle), Box 2.6 (black circle).

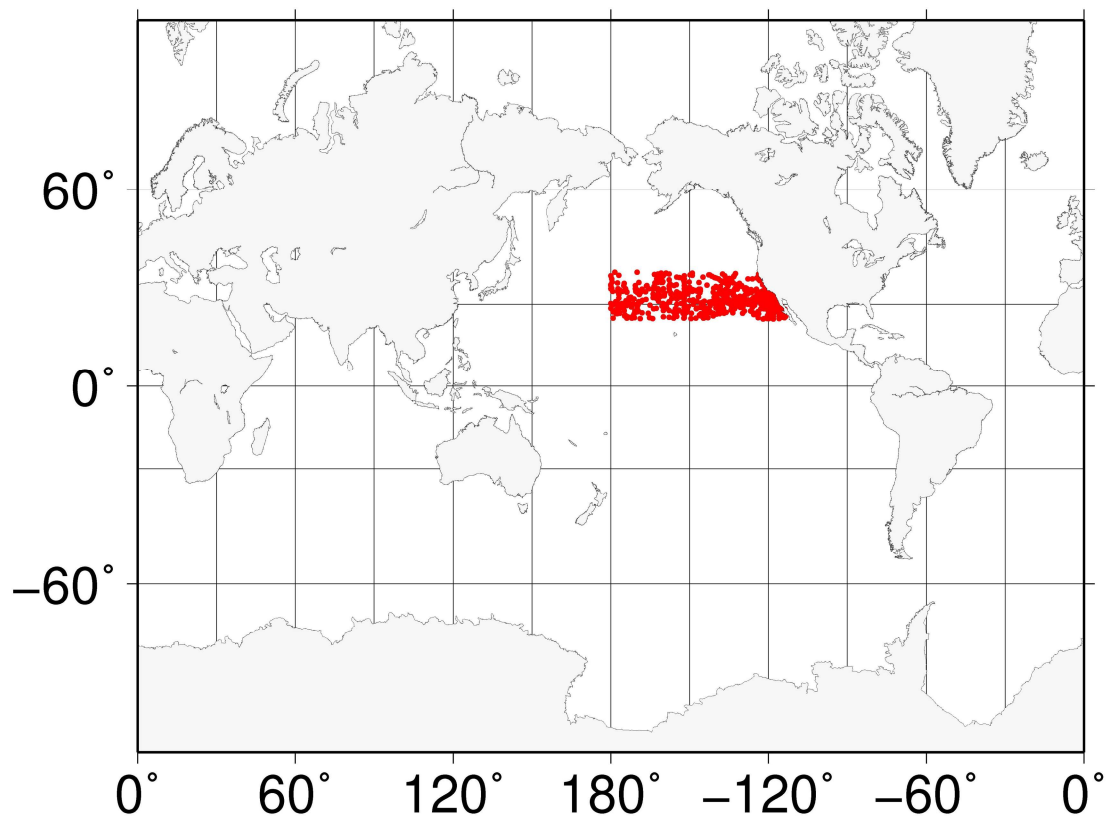


Fig. 2.3 Sampling location (red point) in the eastern North Pacific Ocean (Box 3).

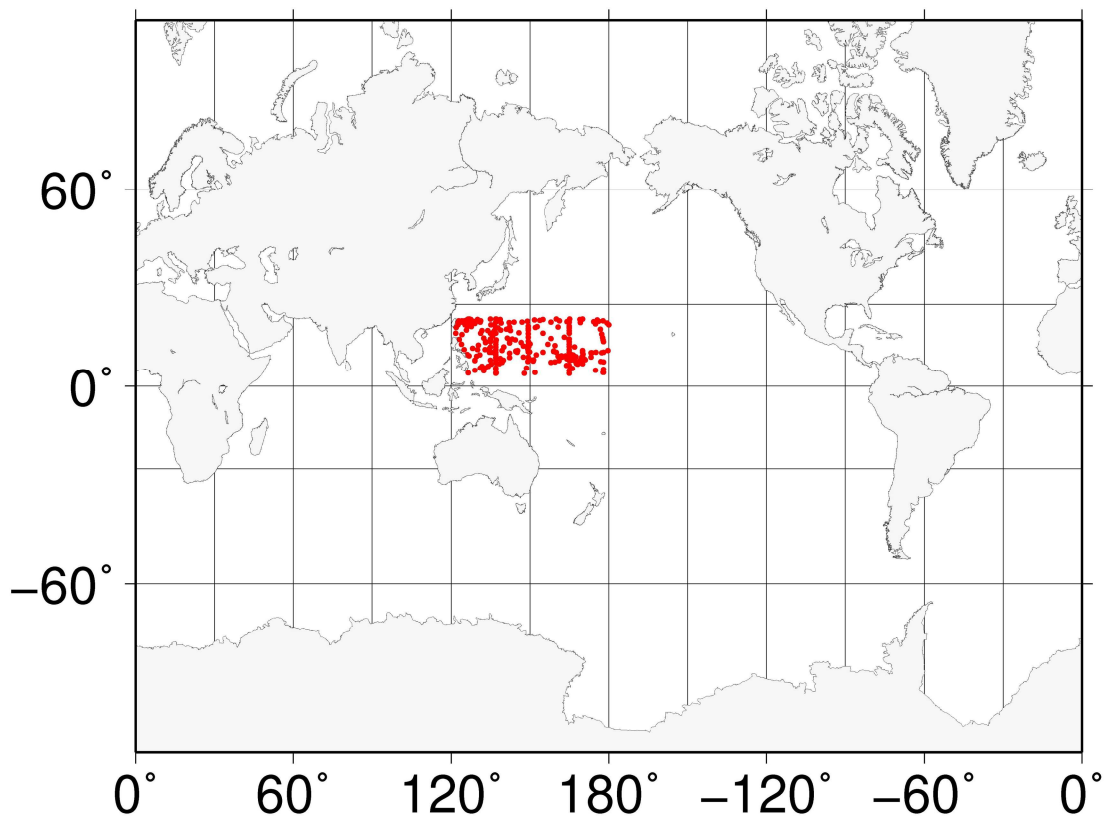


Fig. 2.4 Sampling location (red point) in the western subtropical North Pacific Ocean (Box 4).

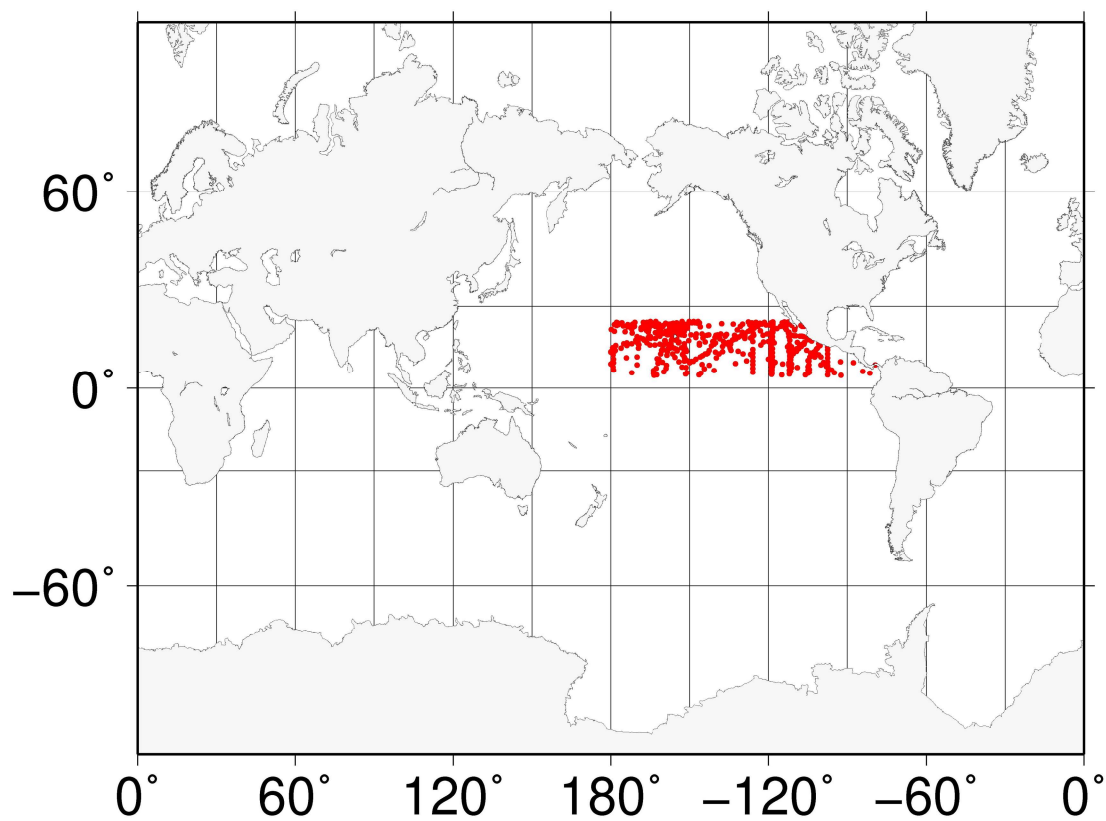


Fig. 2.5 Sampling location (red point) in the eastern subtropical North Pacific Ocean (Box 5).

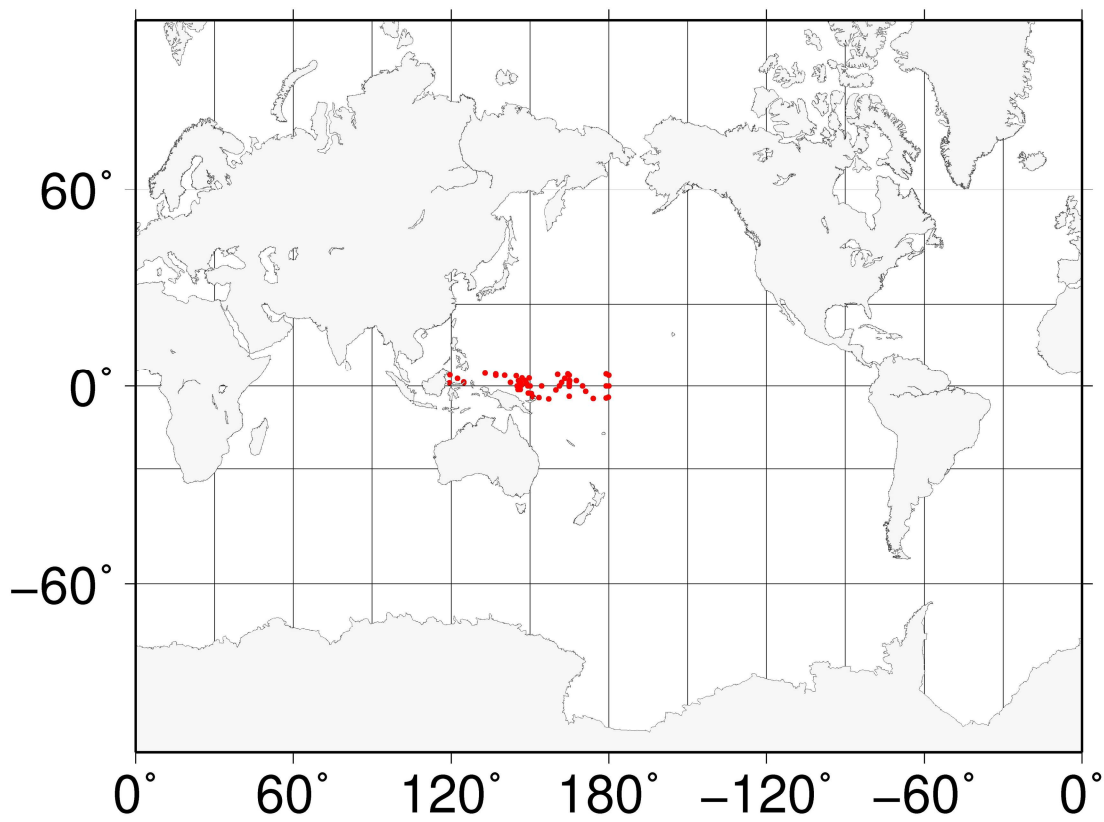


Fig. 2.6 Sampling location (red point) in the western equatorial Pacific Ocean (Box 6).

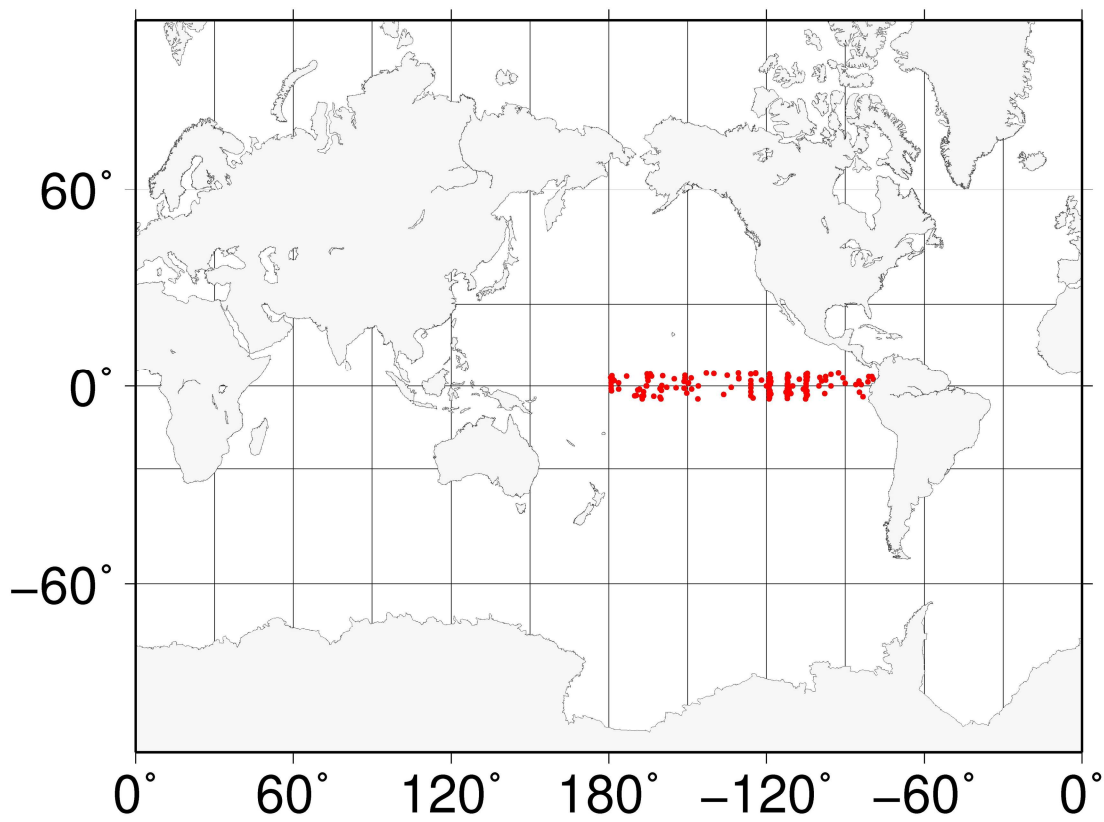


Fig. 2.7 Sampling location (red point) in the eastern equatorial Pacific Ocean (Box 7).

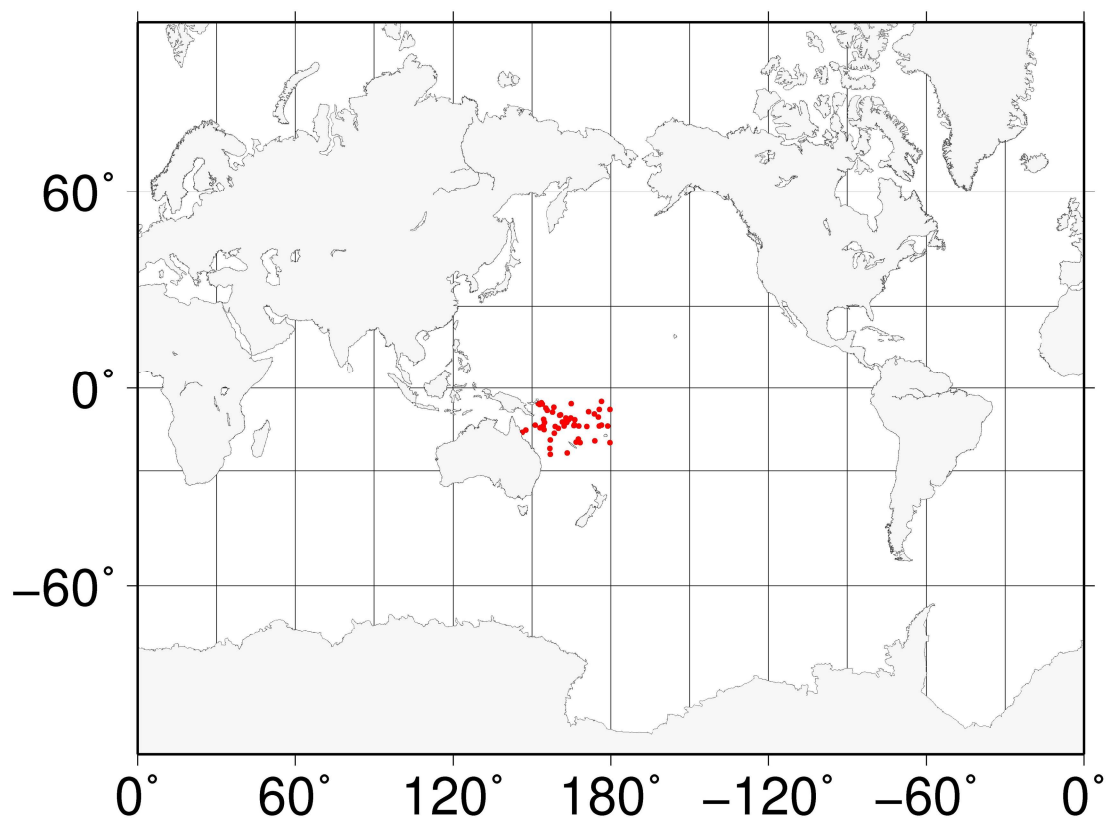


Fig. 2.8 Sampling location (red point) in the western subtropical South Pacific Ocean (Box8).

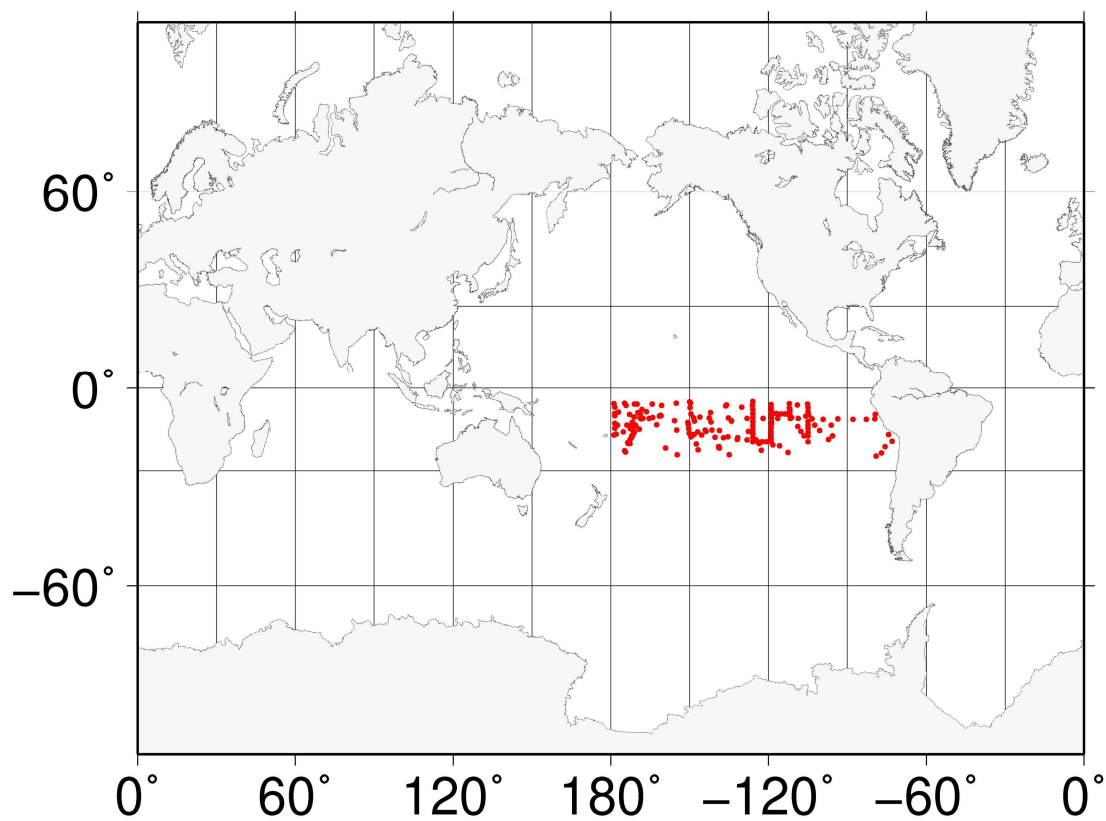


Fig. 2.9 Sampling location (red point) in the eastern subtropical South Pacific Ocean (Box 9).

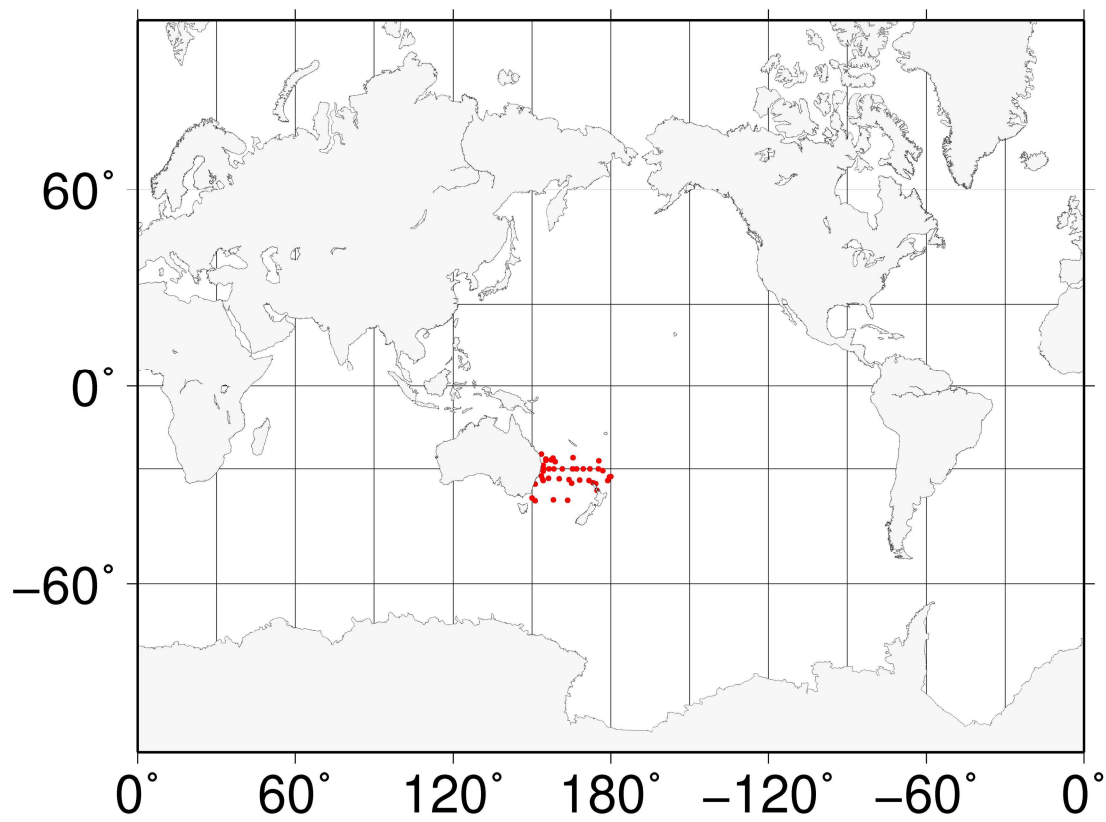


Fig. 2.10 Sampling location (red point) in the western South Pacific Ocean (Box 10).

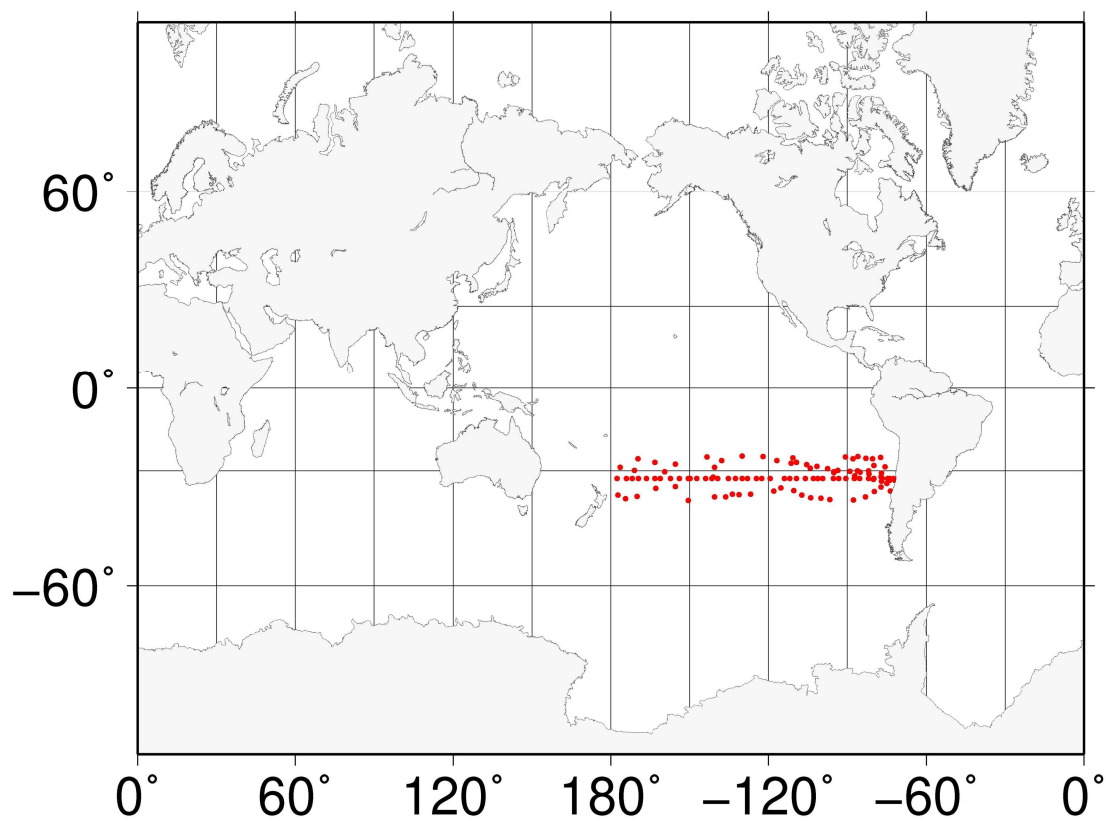


Fig. 2.11 Sampling location (red point) in the eastern South Pacific Ocean (Box 11).

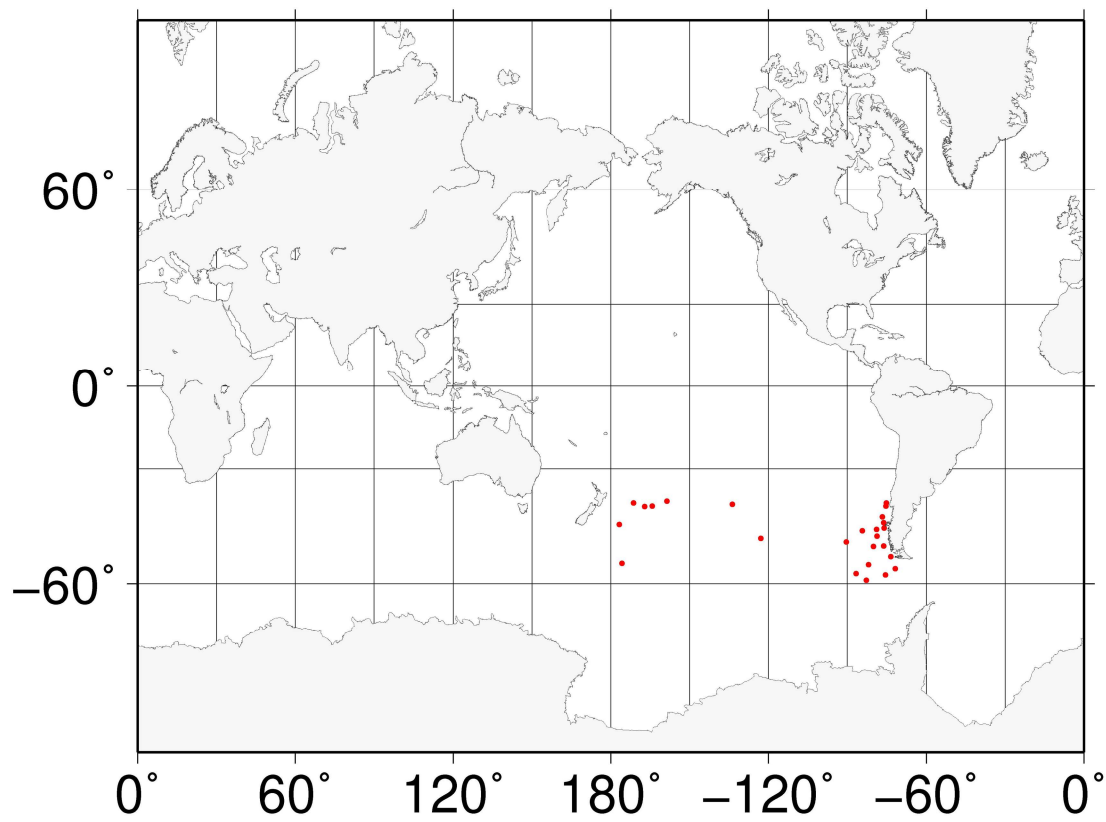


Fig. 2.12 Sampling location (red point) in the eastern Southern Ocean (Box 12).

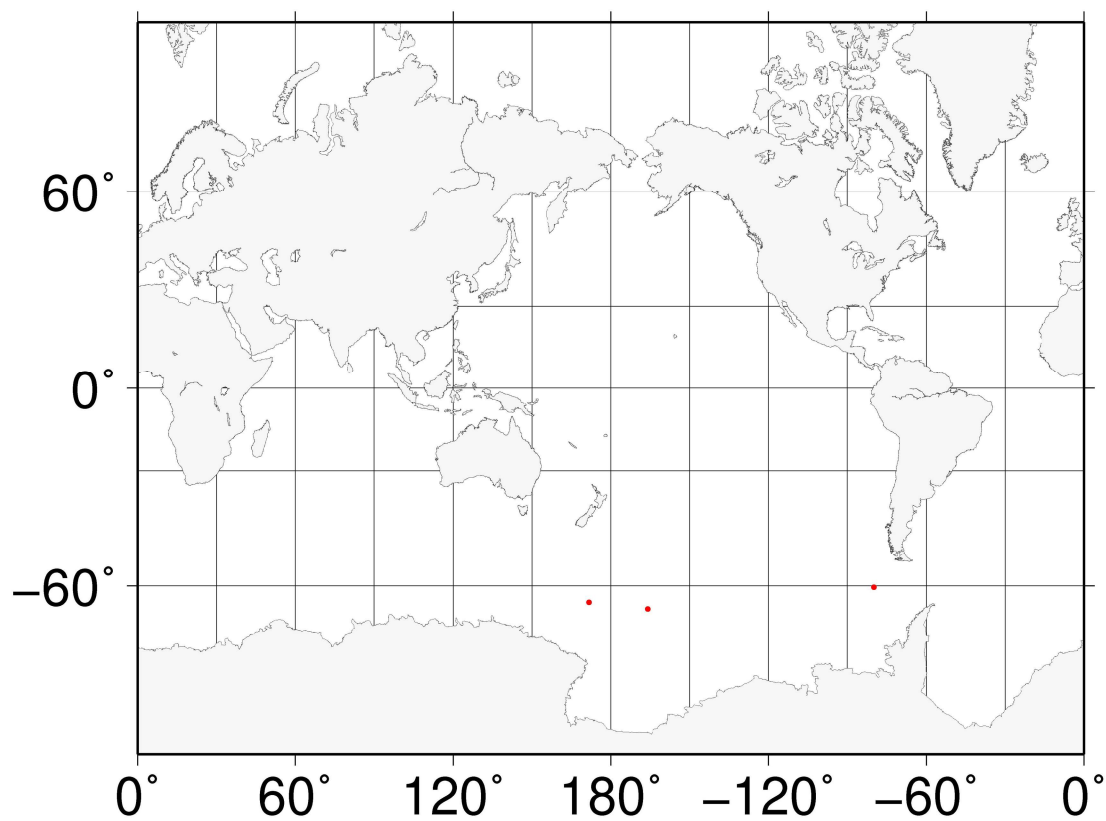


Fig. 2.13 Sampling location (red point) in the eastern Pacific sector of Antarctic Ocean (Box 13).

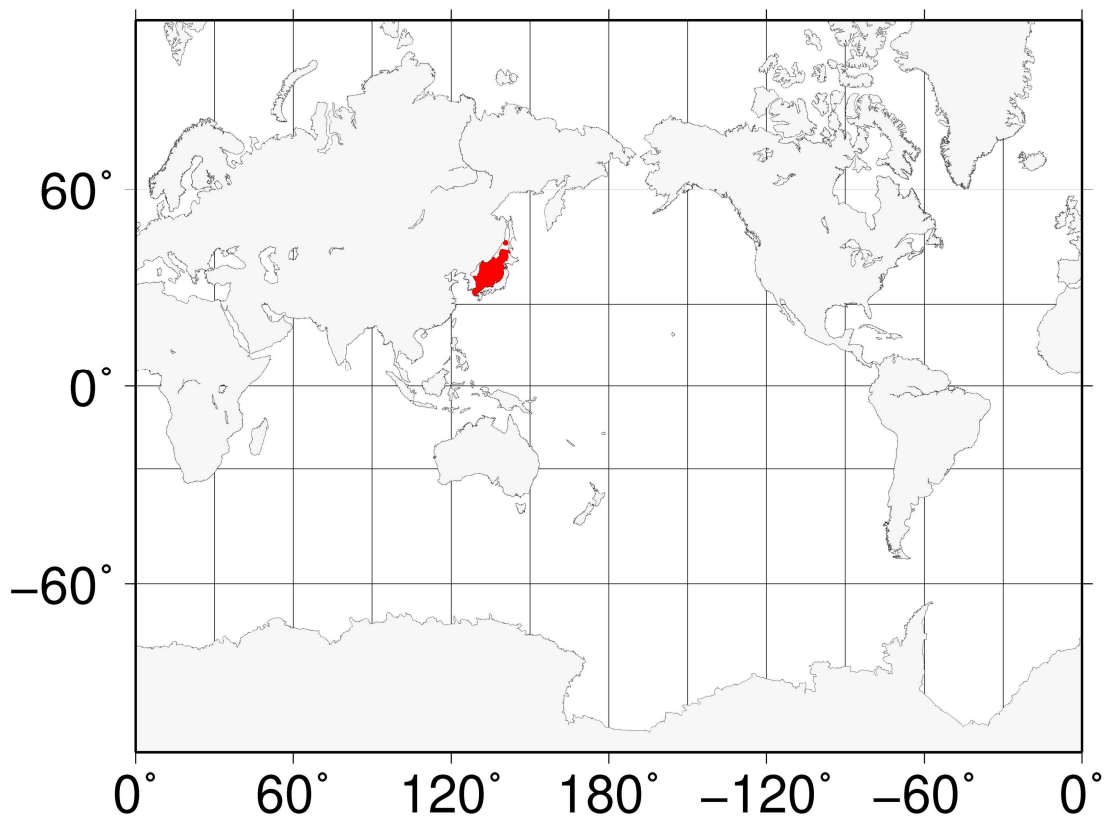


Fig. 2.14 Sampling location (red point) in the Japan Sea (Box 14).

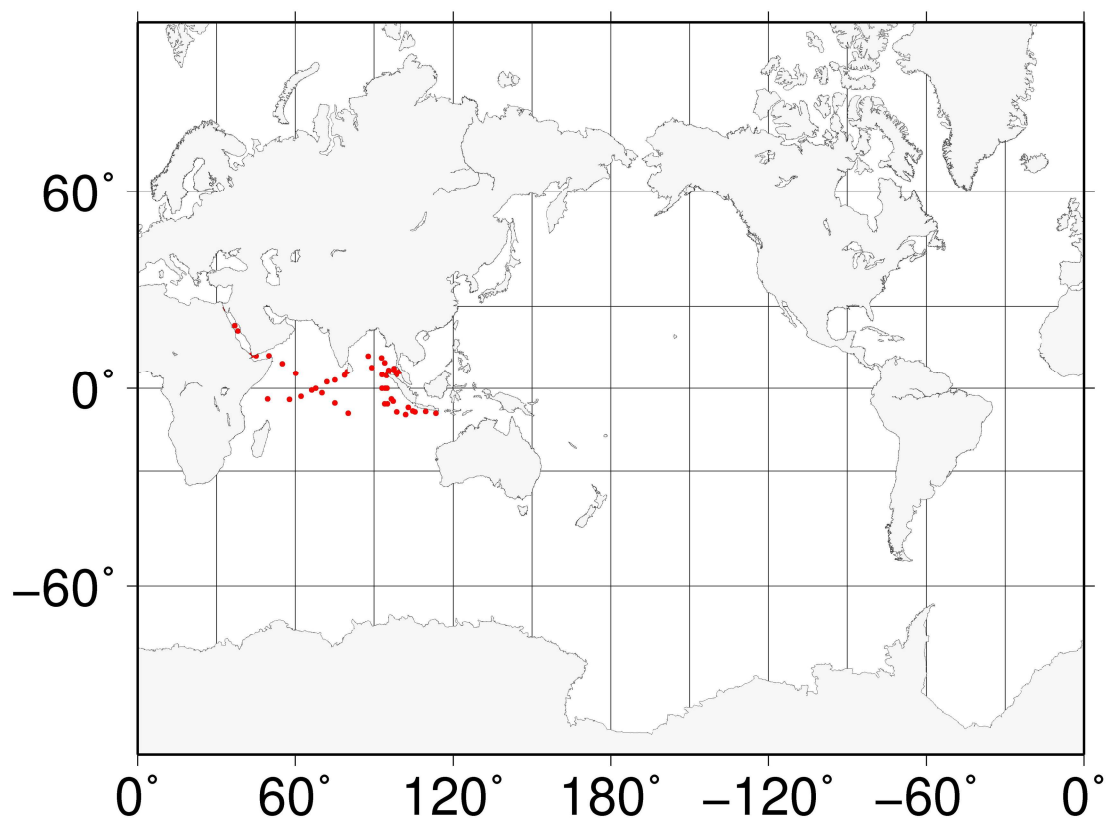


Fig. 2.15 Sampling location (red point) in the Arabian Sea (Box 15).

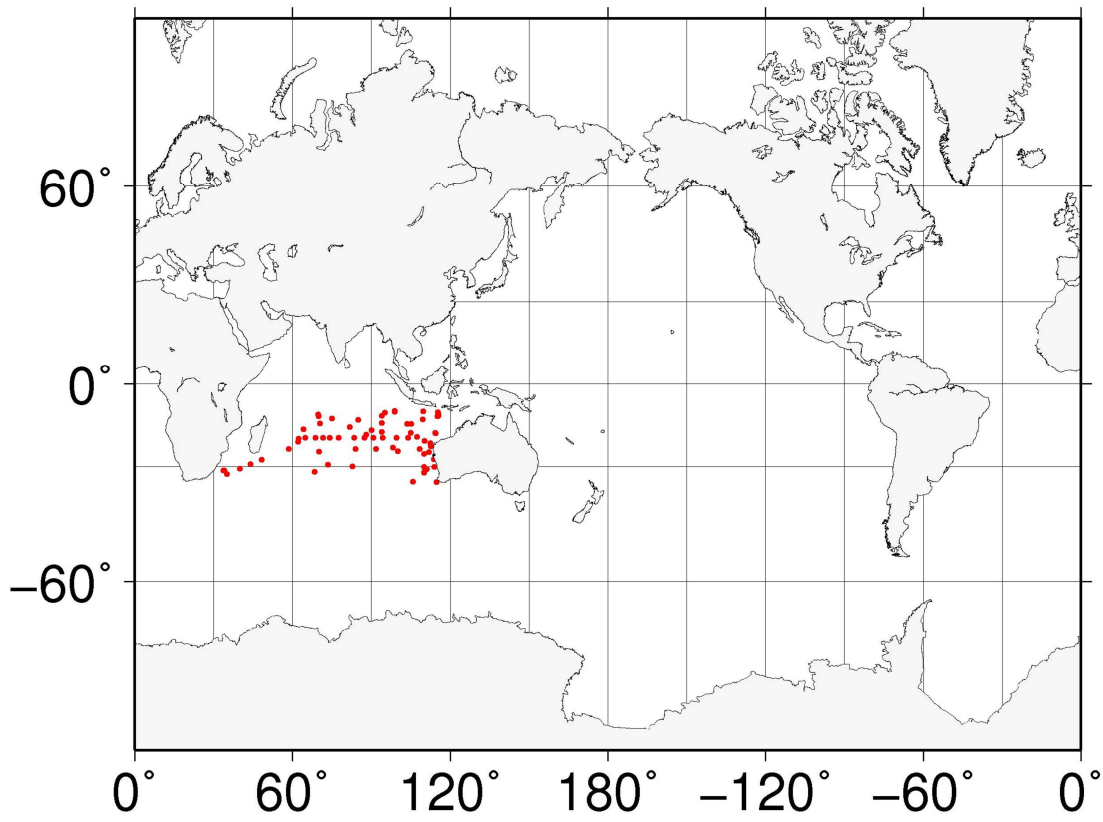


Fig. 2.16 Sampling location (red point) in the Indian Ocean (Box 16). IRSN datasets have been added to HAMGlobal2021.

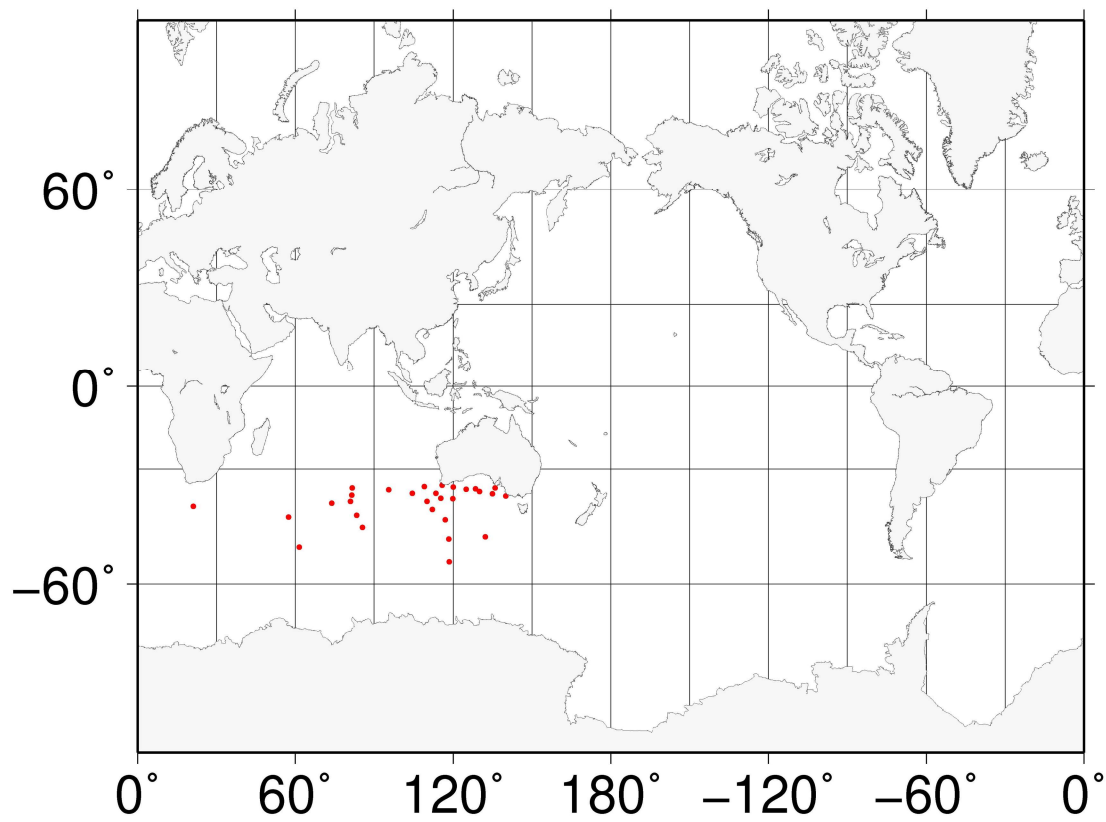


Fig. 2.17 Sampling location (red point) in the Southern Ocean (Box 17).

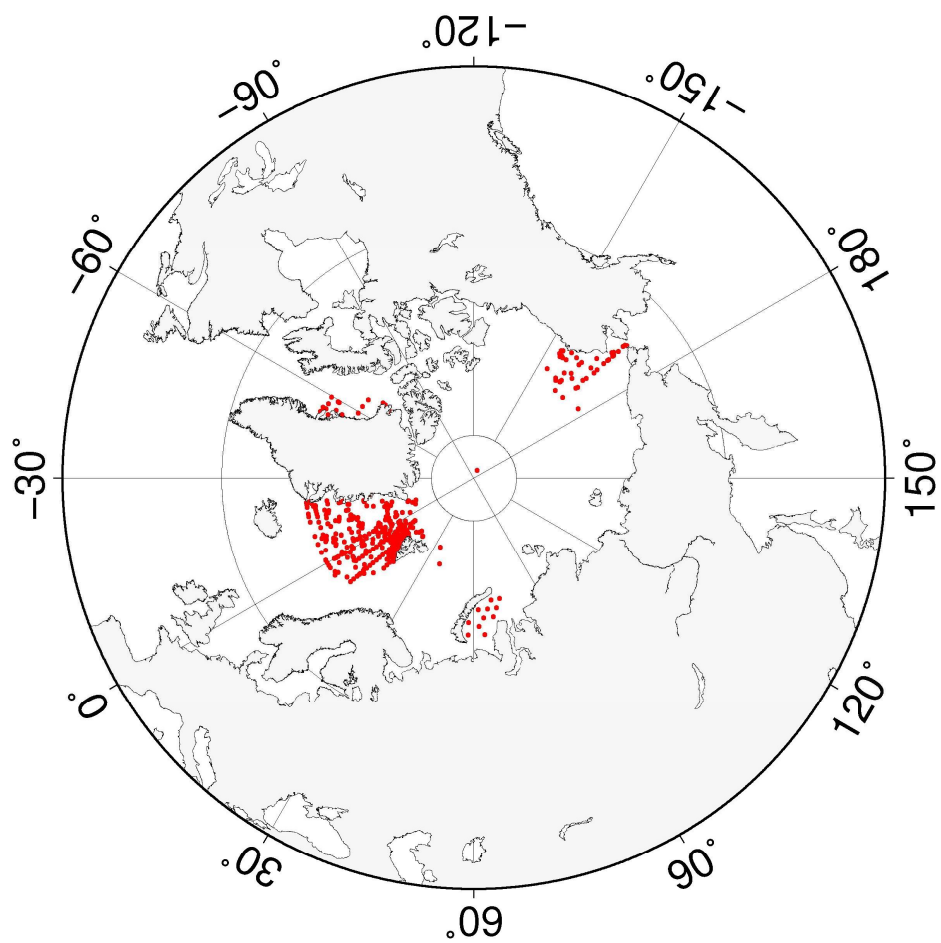


Fig. 2.18 Sampling location (red point) in the Arctic Ocean (Box 18).

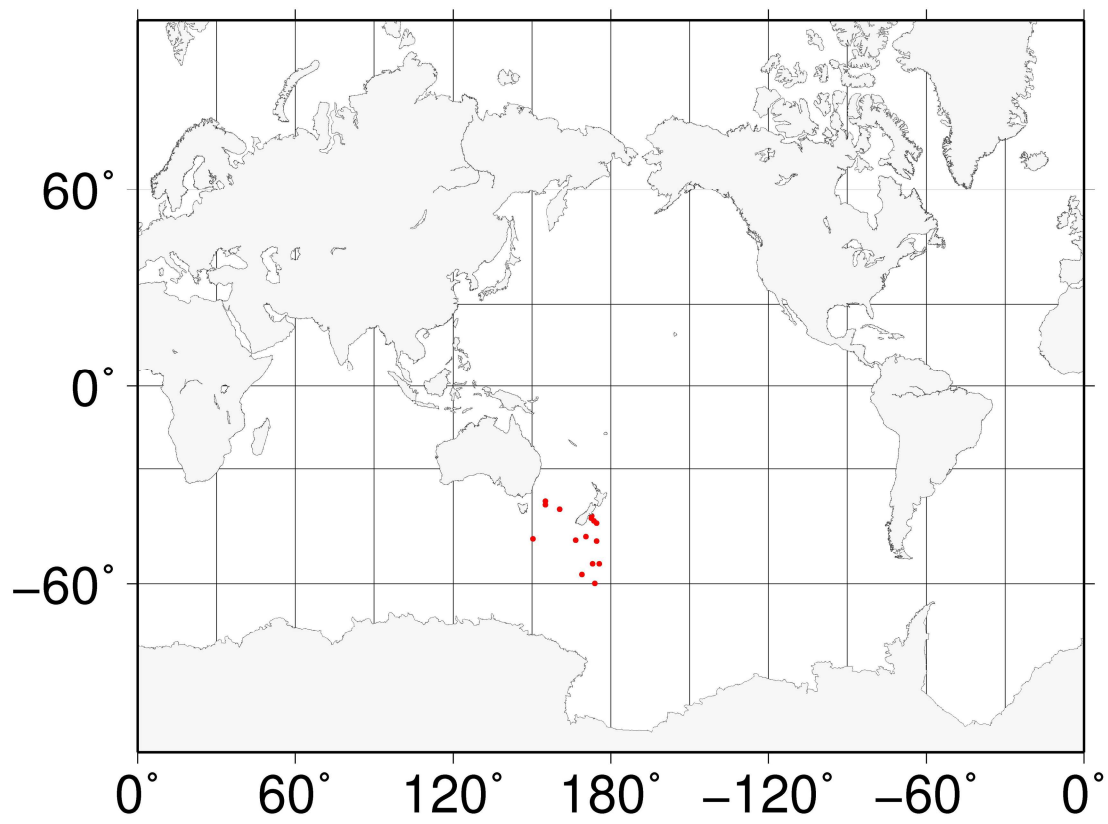


Fig. 2.19 Sampling location (red point) in the Middle Southern Ocean (Box 19).



Fig. 2.20 Sampling location (red point) in the Barents Sea & Coast of Norway (Box 20). **IRSN datasets have been added to HAMGlobal2021.**

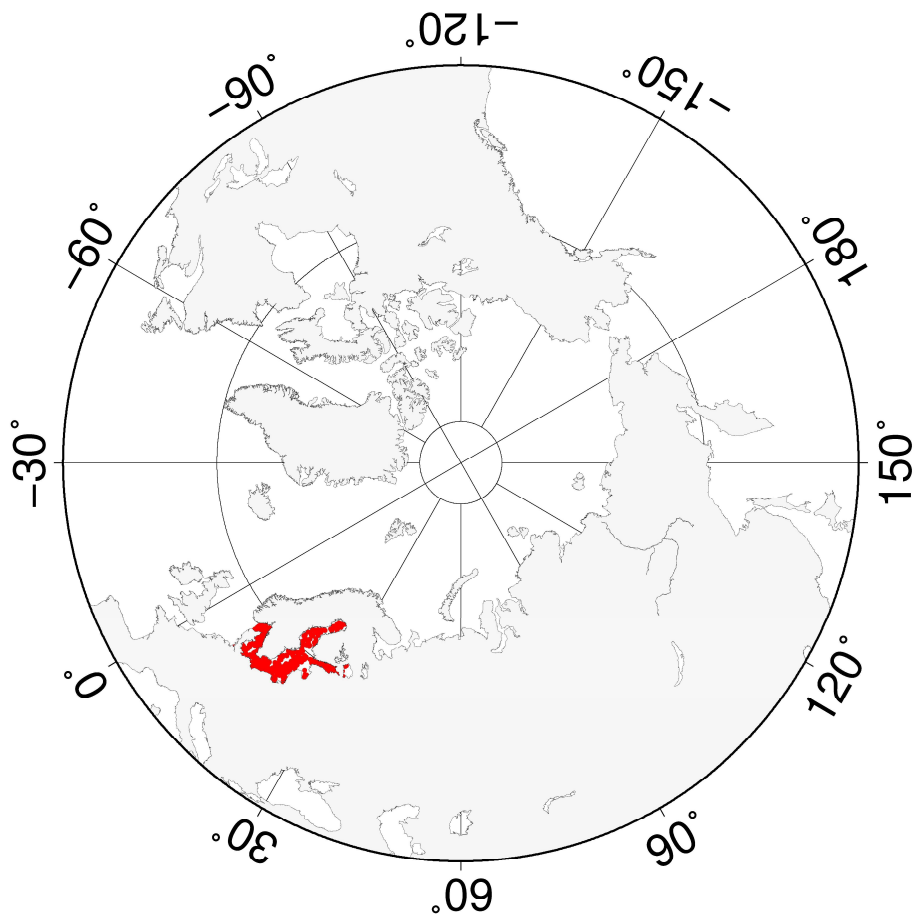


Fig. 2.21 Sampling location (red point) in the Baltic Sea (Box 21).

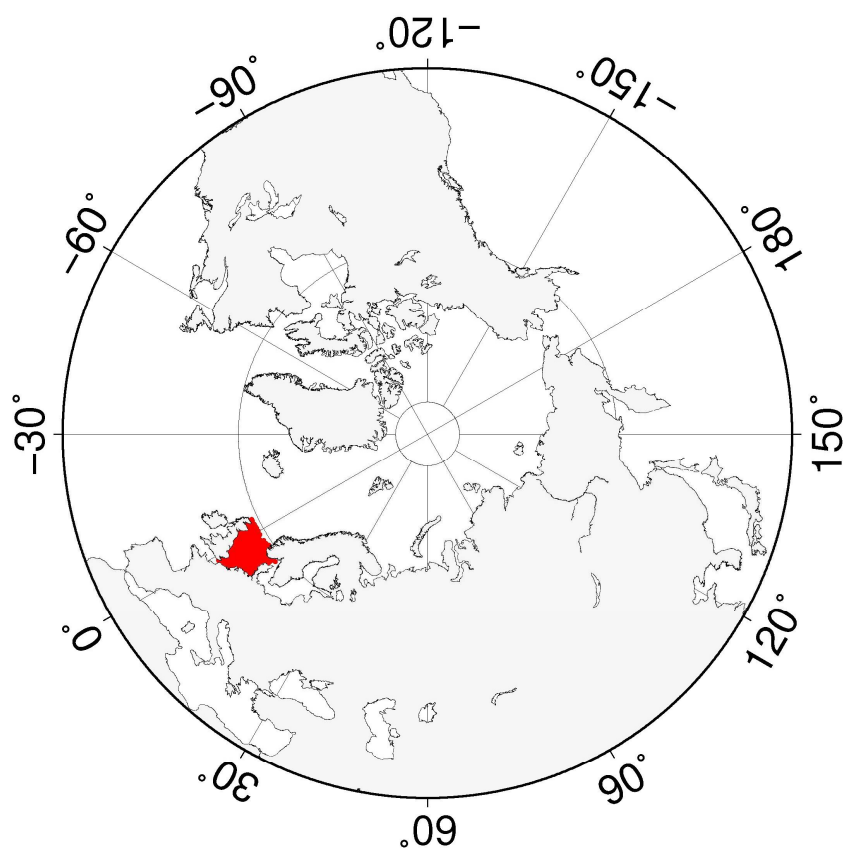


Fig. 2.22 Sampling location (red point) in the eastern North Sea (Box 22). **IRSN datasets have been added to HAMGlobal2021.**

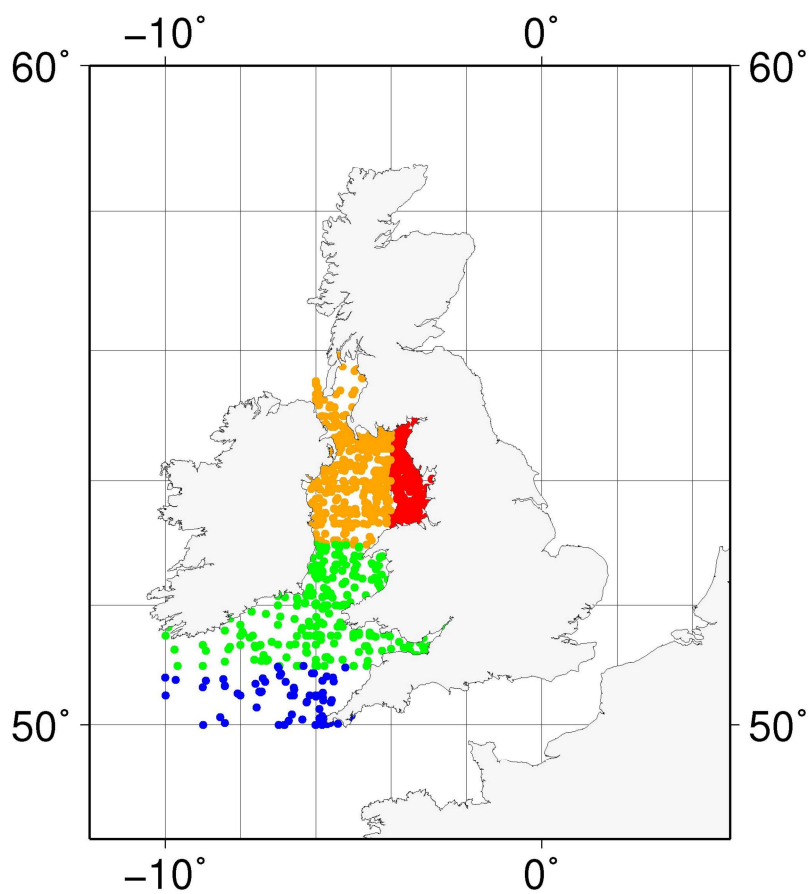


Fig. 2.23 Sampling location in the Irish Sea (Box 23). Box23 is divided into five sub-boxes, Box 23.1 (red circle), Box 23.2 (orange circle), Box 23.3 (green circle), Box 23.4 (blue circle), and Box 23.5 (no data). IRSN datasets have been added to HAMGlobal2021.

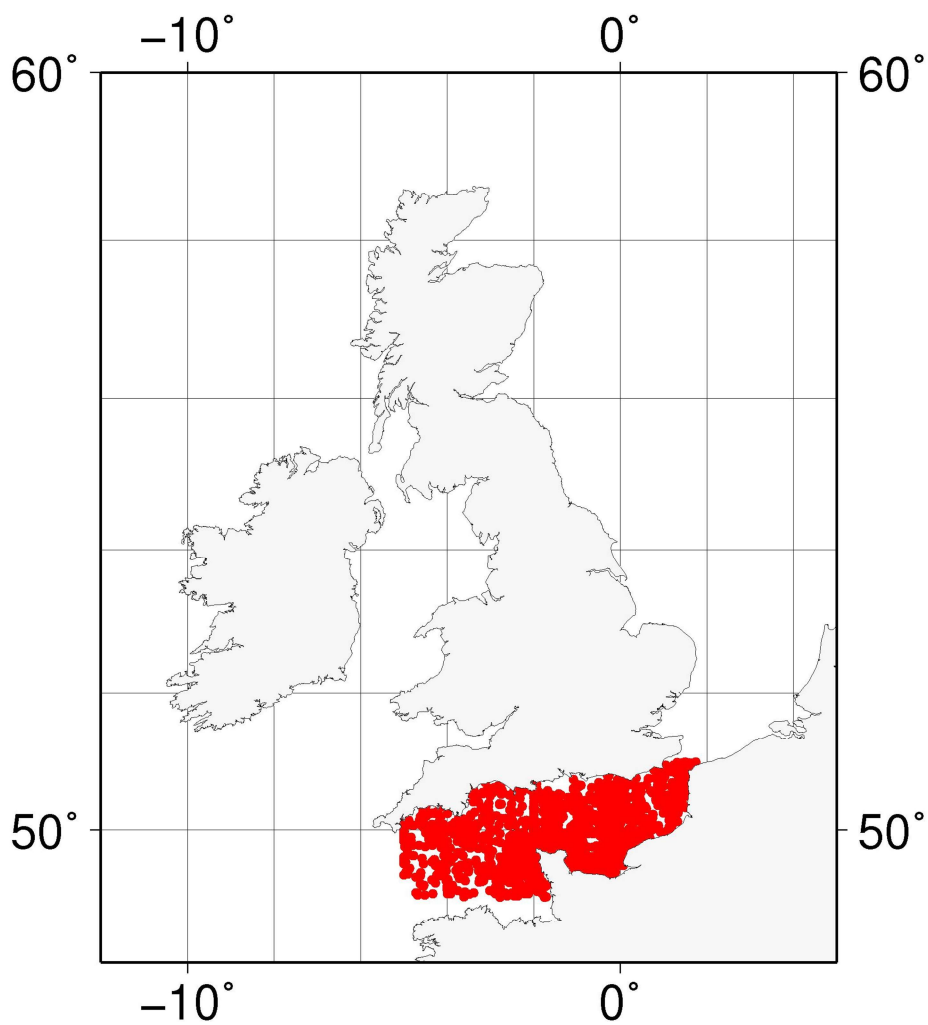


Fig. 2.24 Sampling location (red point) in the English Channel (Box 24). IRSN datasets have been added to HAMGlobal2021.

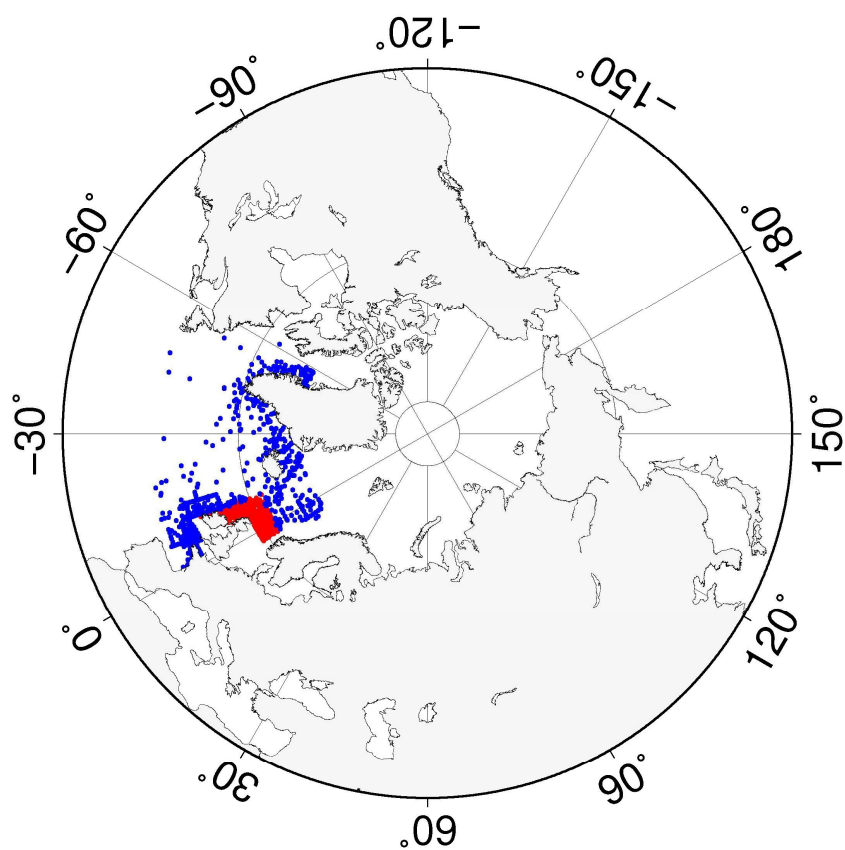


Fig. 2.25 Sampling location and temporal variation of ^{137}Cs activity concentration in the northern North Atlantic Ocean (Box25). Box25 is divided into two sub-boxes, Box25.1 (red circle) and Box25.2 (blue circle). IRSN datasets have been added to HAMGlobal2021.

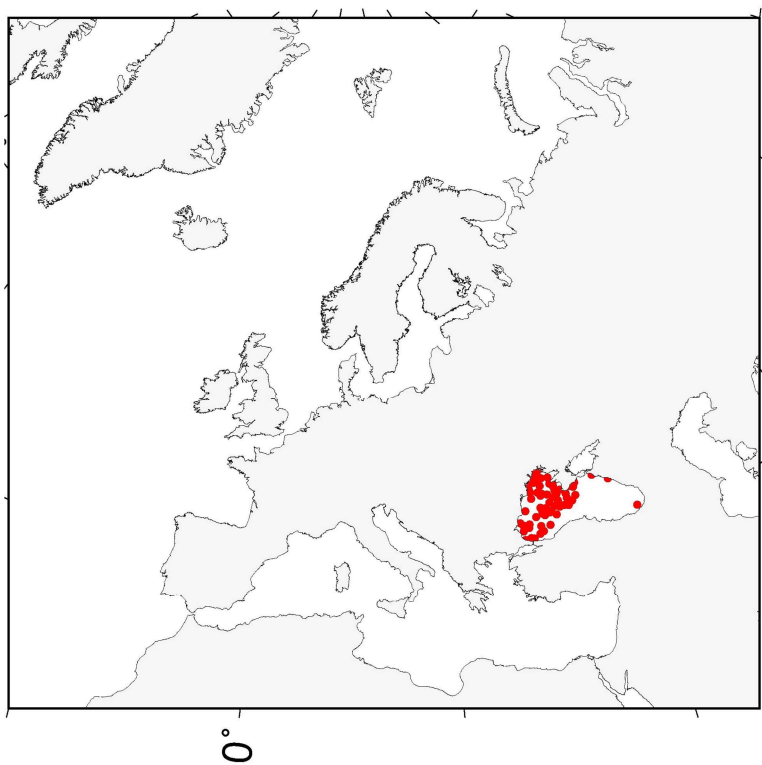


Fig. 2.26 Sampling location (red point) in the Black Sea (Box 26).

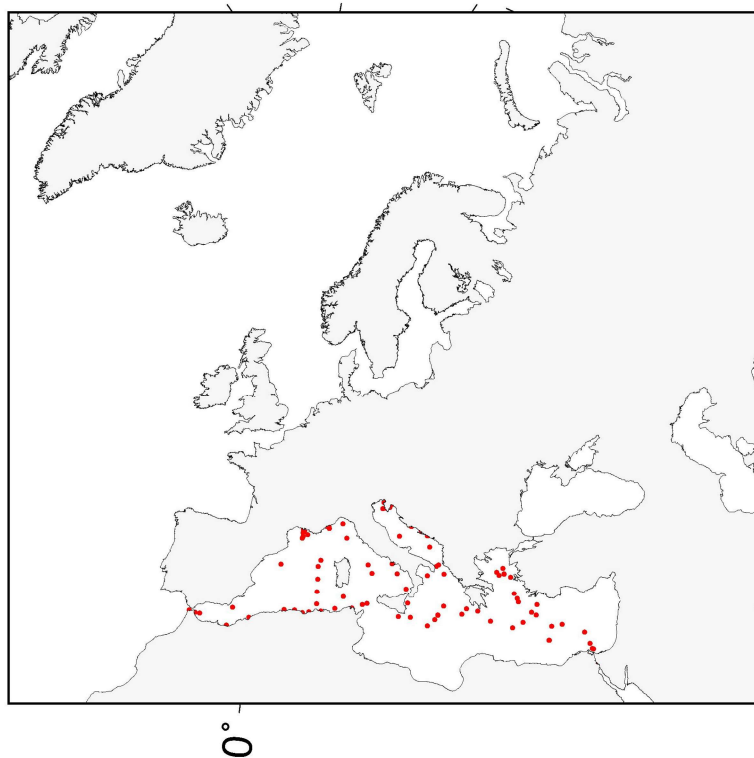


Fig. 2.27 Sampling location (red point) in the Mediterranean Sea (Box 27). IRSN datasets have been added to HAMGlobal2021.

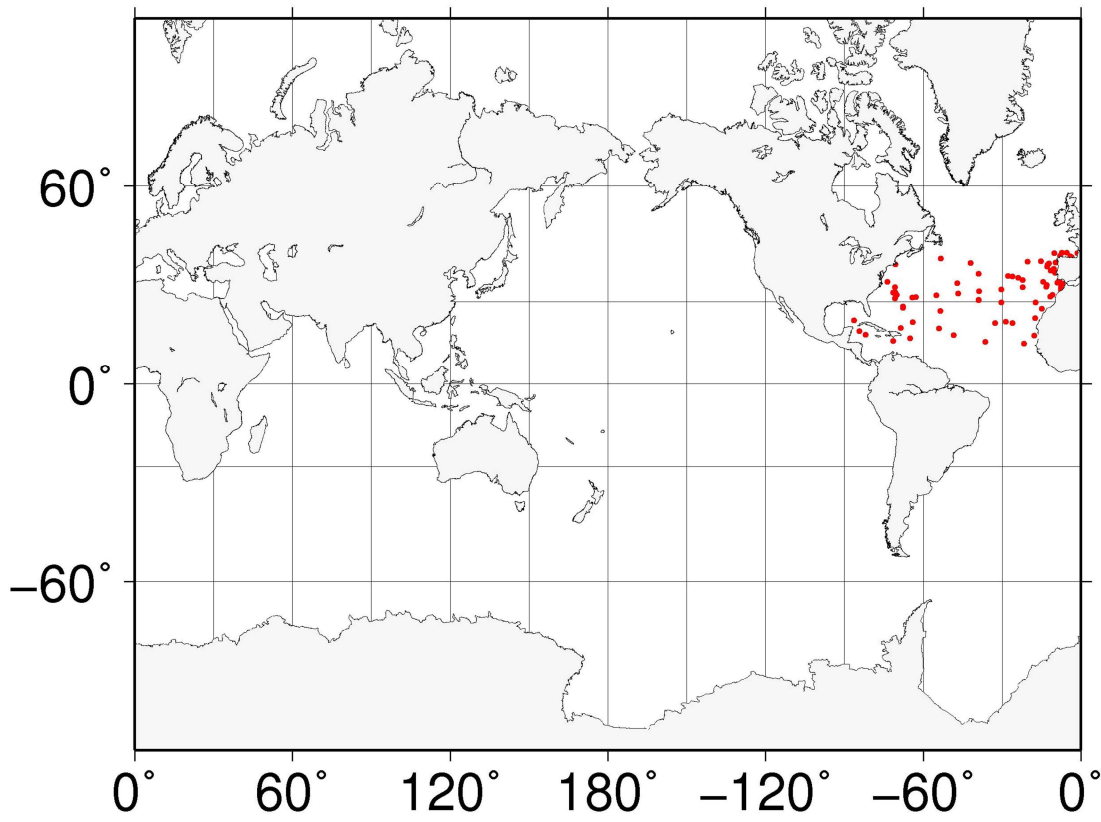


Fig. 2.28 Sampling location (red point) in the North Atlantic Ocean (Box 28). IRSN datasets have been added to HAMGlobal2021.

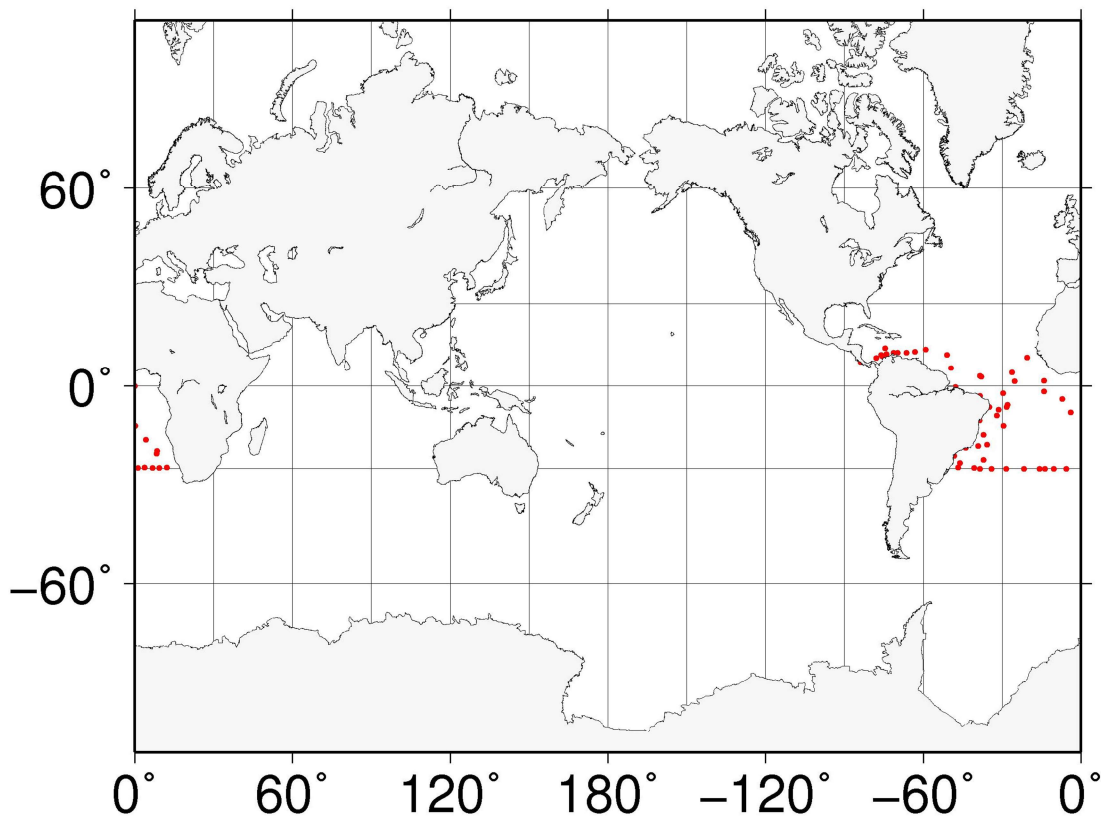


Fig. 2.29 Sampling location (red point) in the Central Atlantic Ocean (Box 29). IRSN datasets have been added to HAMGlobal2021.

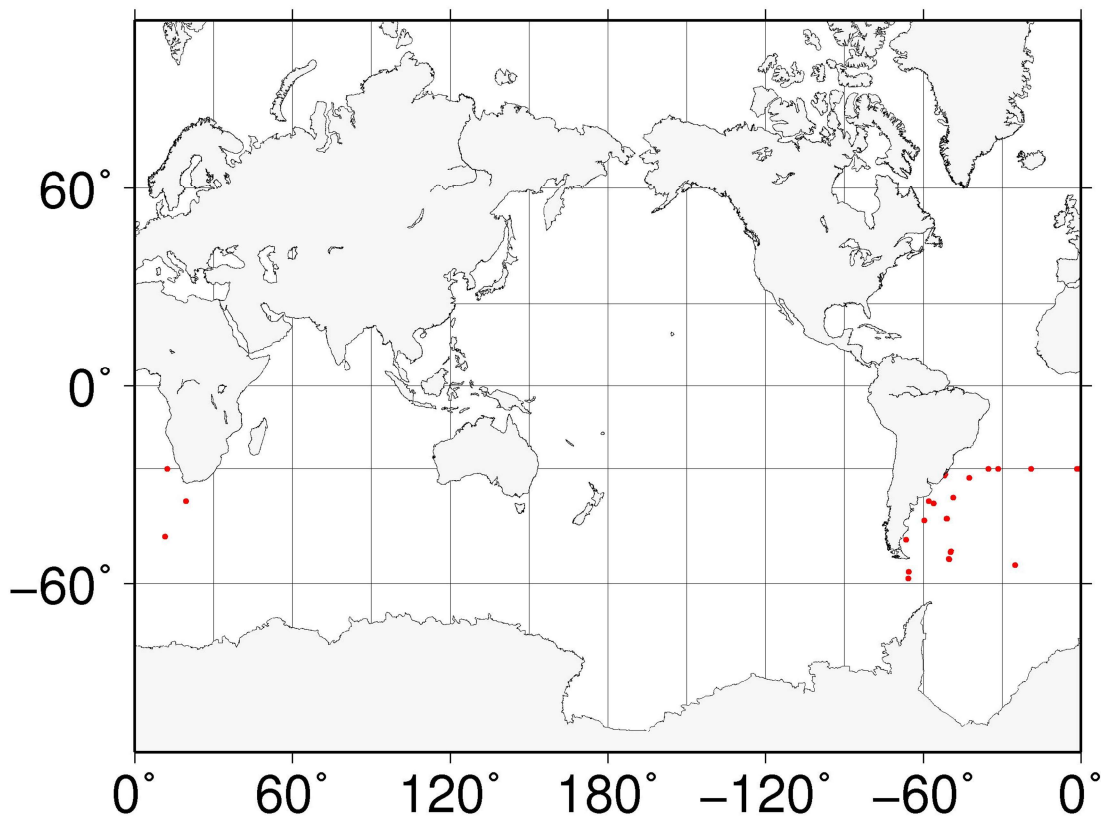


Fig. 2.30 Sampling location (red point) in the South Atlantic Ocean (Box 30). IRSN datasets have been added to HAMGlobal2021.

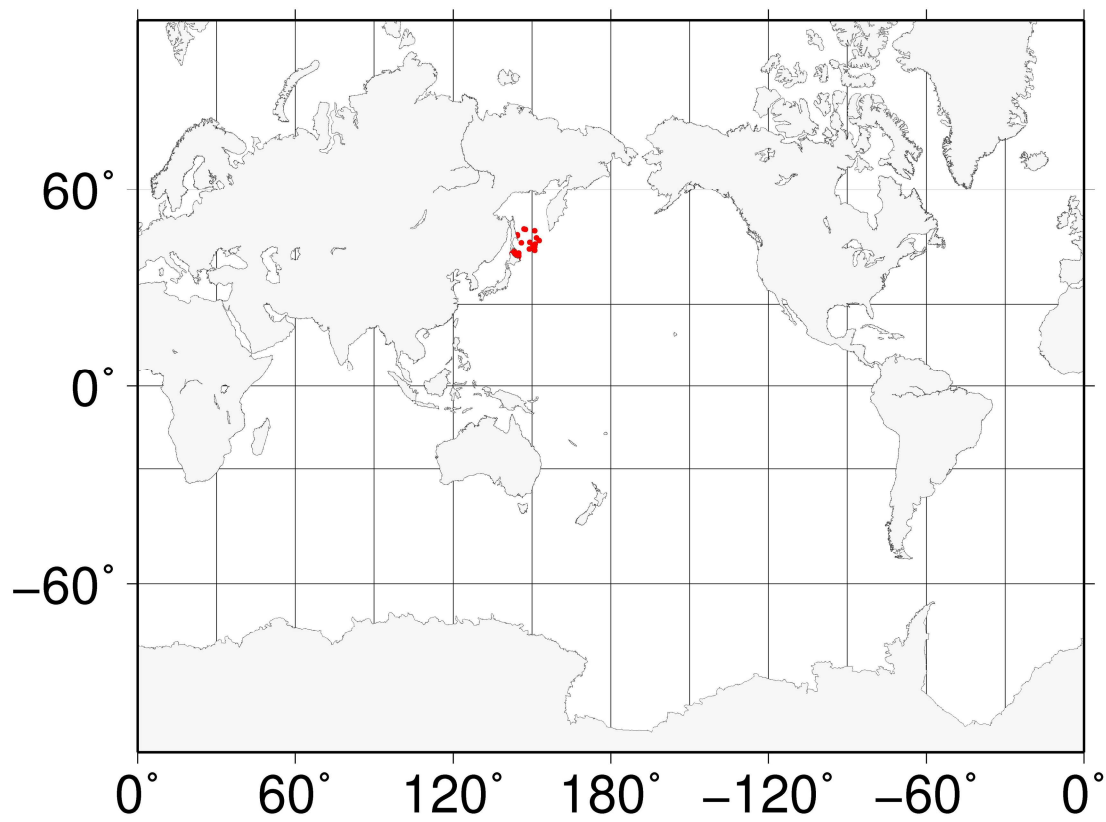


Fig. 2.31 Sampling location (red point) in the Sea of Okhotsk (Box 31).

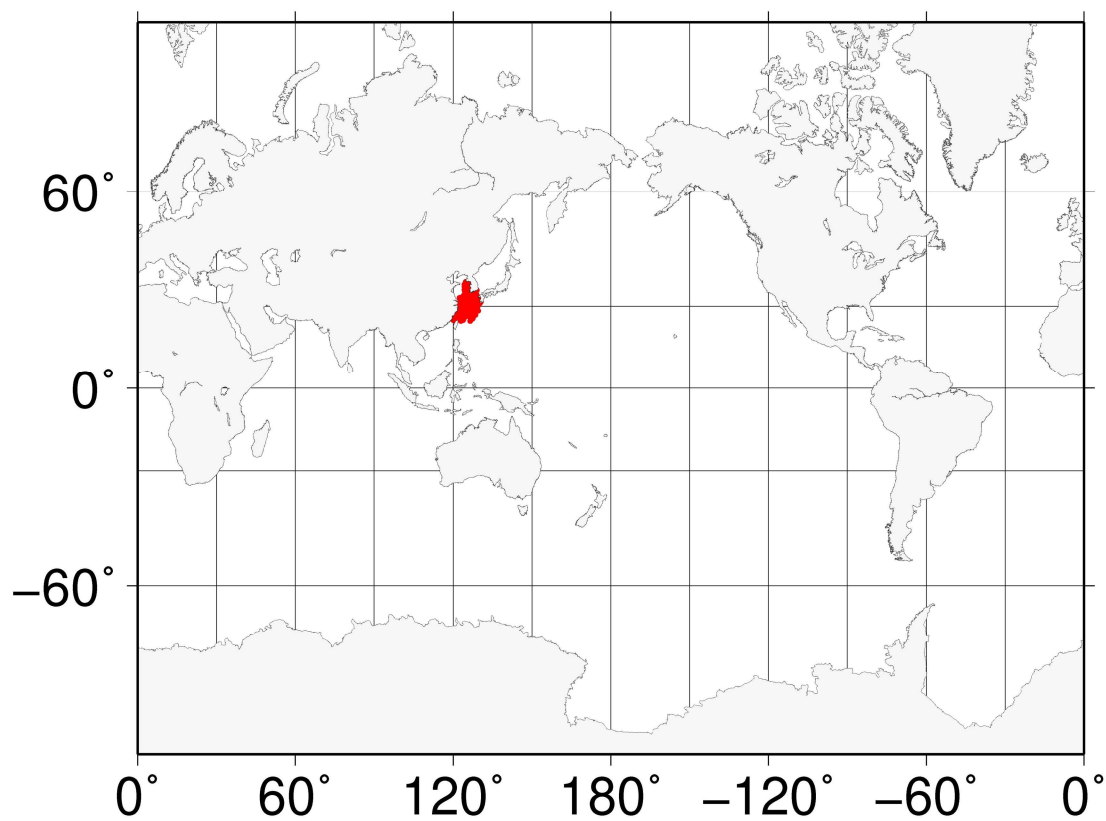


Fig. 2.32 Sampling location (red point) in the eastern China Sea (Box32).

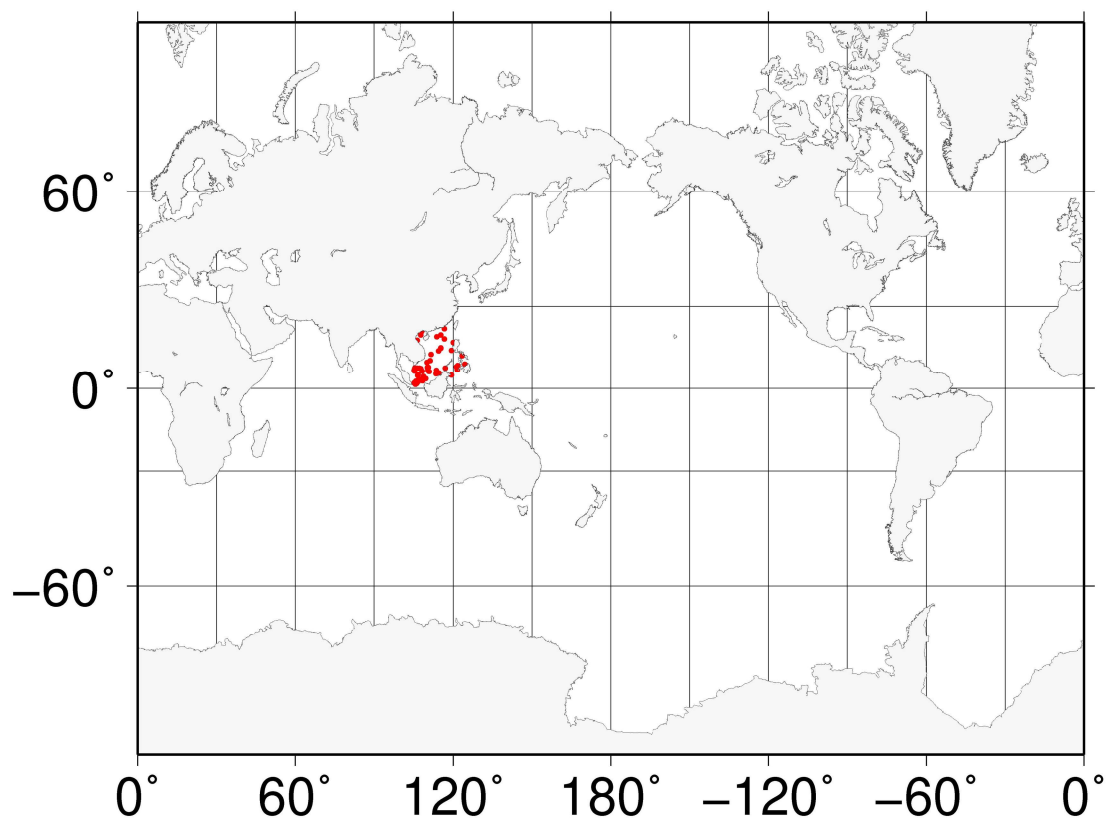


Fig. 2.33 Sampling location (red point) in the South China Sea (Box 33).

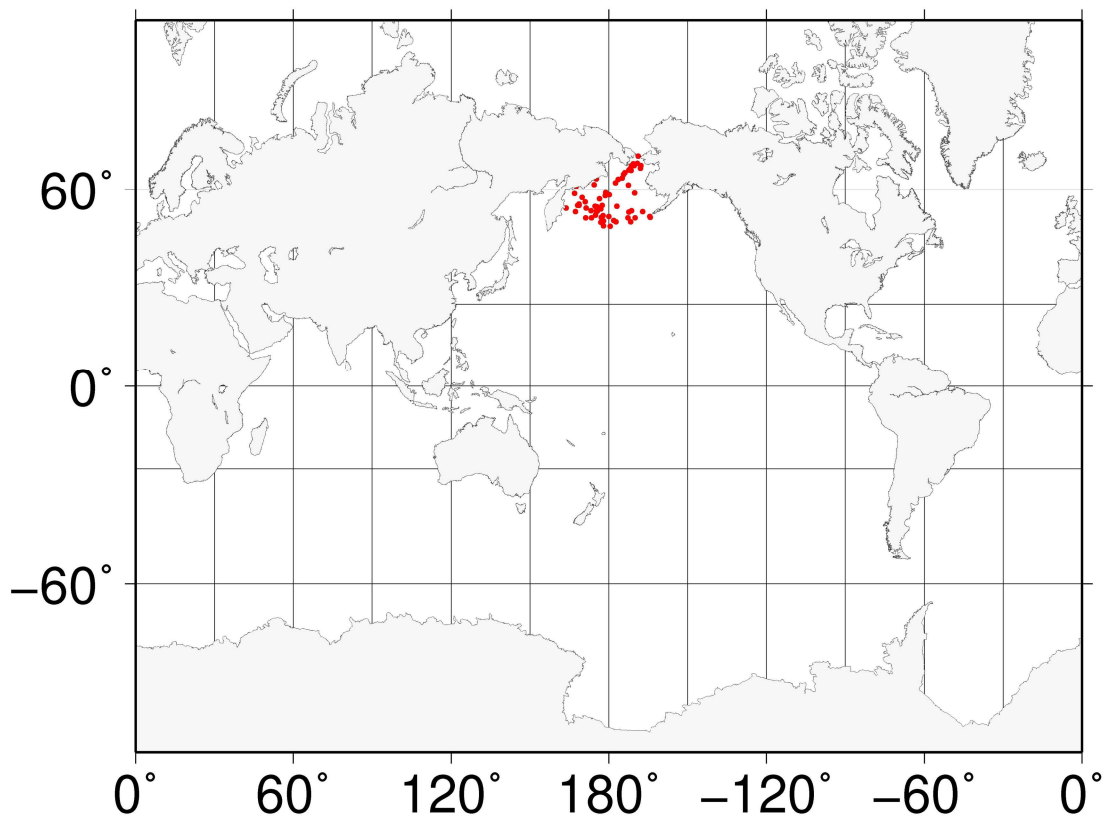


Fig. 2.34 Sampling location (red point) in the Bering Sea (Box 34).

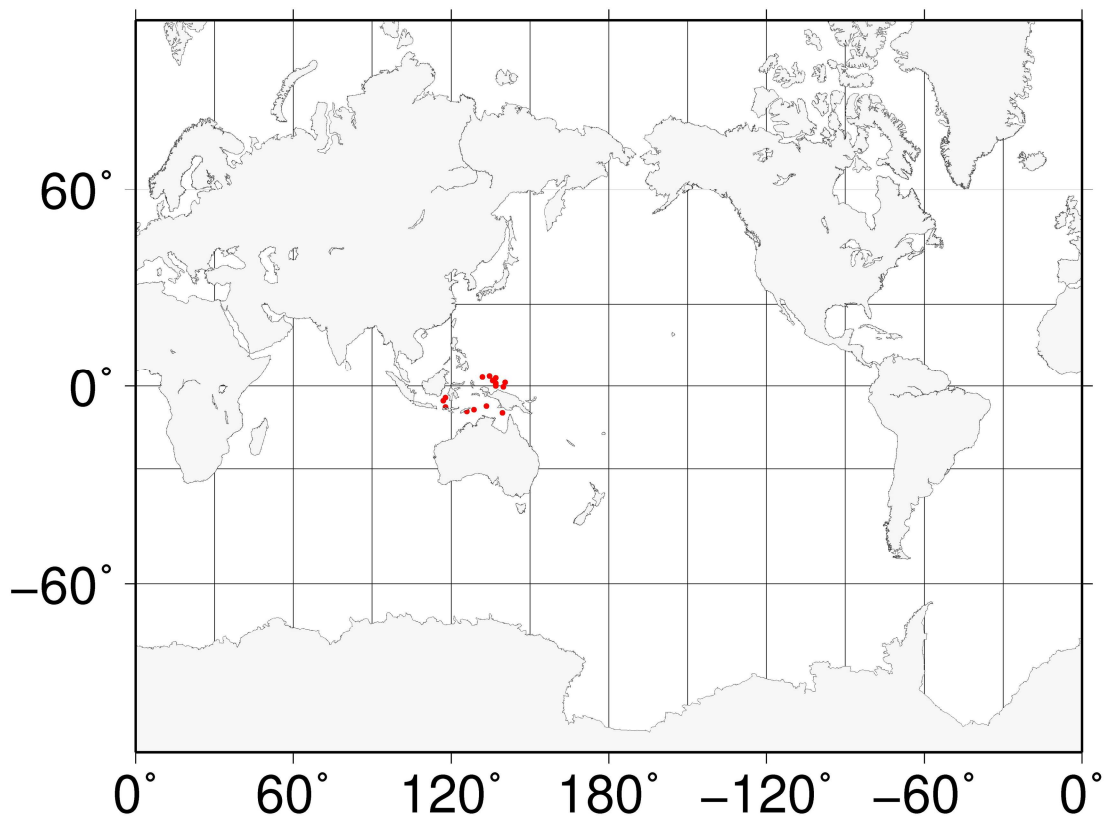


Fig. 2.35 Sampling location (red point) in the Indonesian Archipelago (Box 35).

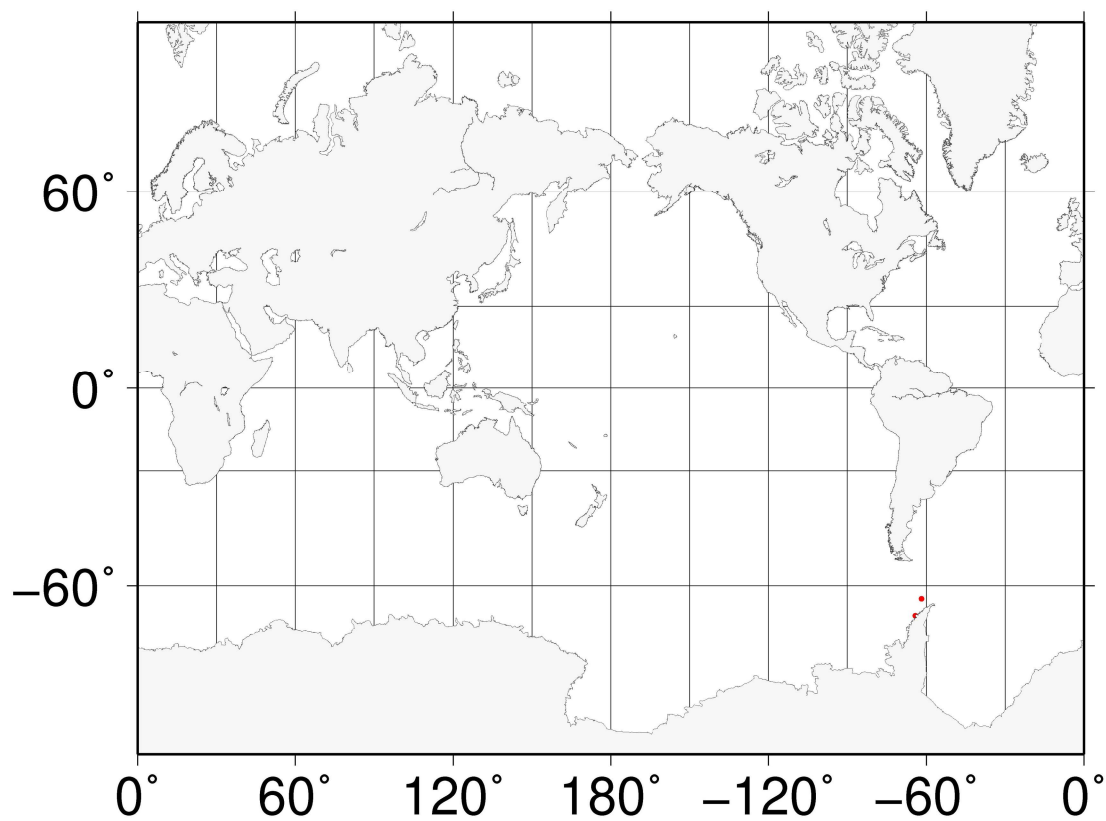


Fig. 2.36 Sampling location (red point) in the Atlantic sector of Antarctic (Box 36).

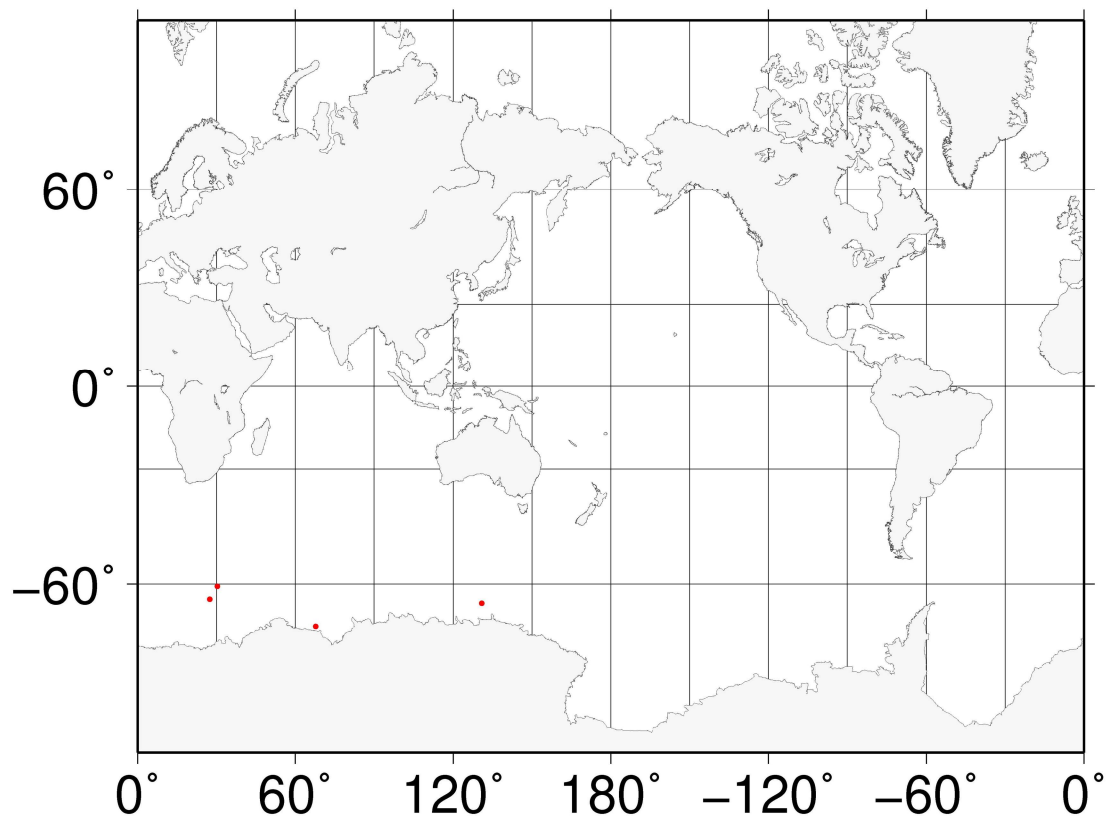


Fig. 2.37 Sampling location (red point) in the Indian sector of Antarctic (Box 37).